



JAMES HARE

SINCE 1865



Braids & Trims





## Braids & Trims

Since 1865, the Hare family has been designing, manufacturing, and distributing elegant fabrics using only the finest materials and techniques.

Now run by the fifth generation, the company still abides by its founder's principles of offering only the best in British design, quality and service.

The new collection of braids, trims, fringes, and drops will bring interest and definition to an interior space. The colours coordinate flawlessly with the James Hare fabric range and are the perfect finishing touch.

We hope you are inspired.

[www.james-hare.com](http://www.james-hare.com)

Elm Braid . . . . .	5	Armillar Braid . . . . .	19
Hatchett Braid . . . . .	6	Ribbon Trim . . . . .	20
Tudor Braid . . . . .	9	Bibury Drops . . . . .	23
Scala Braid . . . . .	10	Howdah Fringe . . . . .	24
Burford Braid . . . . .	13	Brush Fringe . . . . .	27
Cora Braid . . . . .	16	Double Fringe . . . . .	27







## Elm Braid

A subtle leaf design with delicate stitching and contrast cording. This classic braid will introduce soft muted colours to any interior scheme and is the perfect edge to curtains, pelmets, sofas, headboards and chairs.



Natural  
9007/01



Pink  
9007/02



Green  
9007/03



Blue  
9007/04

Quality: 9007 Composition: 100% Linen Colours: 4  
Width: 8cm/3.1" Vertical Repeat 1.5cm/0.6"



## Hatchett Braid

A striking braid with intense stitching creating a wool like surface texture. Matt yarns are embroidered in a block geometric design, this fun braid is the perfect colour carrier and provides a strong focal point when decorating.



Grey/Gold  
9008/01

Pink/Orange  
9008/02

Blue/Green  
9008/03

Quality: 9008 Composition: 40% Spun Polyester, 30% Viscose, 30% Acrylic Colours: 3  
Width: 7.2cm/2.8" Vertical Repeat 8cm/3.1"







## Tudor Braid

Inspired by the elaborate braided hairstyles worn in the English Tudor period. The four colourways perfectly complement the plain fabric range, giving a textural, decorative finishing edge and interesting accent to soft furnishings with its intricate corded pattern.



Grey  
9003/01



Terracotta  
9003/02



Green  
9003/03



Ink  
9003/04

Quality: 9003 Composition: 100% Linen Colours: 4  
Width: 10cms/3.94" Horizontal Repeat: 10cms/3.94" Vertical Repeat: 1.7cms/0.67"



## Scala Braid

This striking Art Deco design braid is a smart combination of cord and embroidery on a glazed ground. Scala is an elegant design for any room.



Natural  
9000/01



Grey  
9000/02



Blue  
9000/03



Black  
9000/04

Quality: 9000 Composition: 78% Cotton 22% Viscose Colours: 4  
Width: 8cms/3.15" Horizontal Repeat: 6.5cms/2.56" Vertical Repeat: 7.5cms/2.95"







## Burford Braid

A striking braid with an embroidered geometric design resulting in a clean modern look, the slightly raised surface of the embroidery gives it a subtle texture. It is a smart braid with many uses, ideal for edging curtains and framing bedheads, or a smart finish on cushions and chairs.



Mineral  
9006/01



Lupine  
9006/02



Ink  
9006/03

Quality: 9006 Composition: 100% Cotton Colours: 3  
Width: 8.5cms/3.3" Horizontal Repeat: 2.5cms/1" Vertical Repeat 2.5cms/1"







## Cora Braid

Named after the Cora Sun-Drop diamond discovered in 2010, the largest known yellow pear-shaped diamond in the world. This braid places the gemstone right at the centre of its design replicating a delicate jewellery piece of inlaid stone.



Natural  
31637/02



Gold  
31637/04



Terracotta  
31637/05



Frost  
31637/03



Silver Grey  
31637/01

Quality: 31637 Composition: 68% Cotton 32% Viscose Colours: 5  
Width: 8cms/3.15" Horizontal Repeat 7cms/2.8" Vertical Repeat: 5cms/1.97"







## Armilla Braid

Armilla is the Latin name for bracelet, fitting for a braid that may encircle furniture or be used to edge a curtain. Created from a velvet jacquard of interwoven chevrons, the result is a complex, yet beautifully simple design.



Neutral  
31636/01



Blush  
31636/02



Jade  
31636/03

Quality: 31636 Composition: 66% Cotton 34% Viscose Colours: 3  
Width: 7.5cms/2.95" Horizontal Repeat: 6cms/2.36" Vertical Repeat: 2.5cms/0.98"



## Ribbon Trim

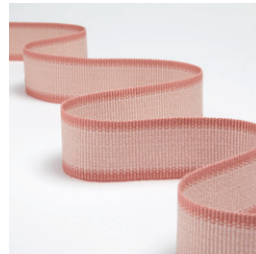
A delicate and subtle trim with a fine ribbed texture, Ribbon Trim has a soft sheen and a gentle ombré at the edge, creating a beautiful and elegant choice to team with both matt and silk fabrics.



Feather  
9004/01



Almond  
9004/02



Pink  
9004/03



Green  
9004/04



Antoinette  
9004/05



Slate Blue  
9004/06

Quality: 9004 Composition: 100% Viscose Colours: 6 Width: 4cms/1.57"





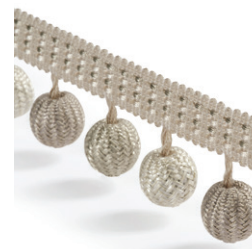


## Bibury Drops

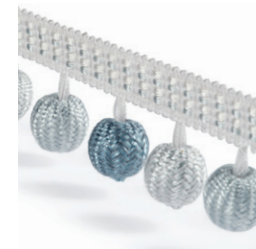
This design is both fun and colourful combining different tones within each colour palette. Whether edged along curtains, cushions or upholstery, this trim is a lively detail for a finishing touch that will be noticed.



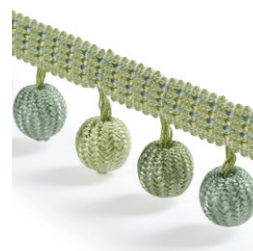
Ivory  
9005/01



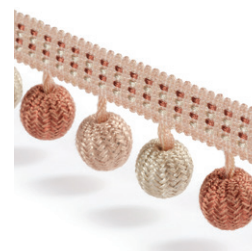
Natural  
9005/02



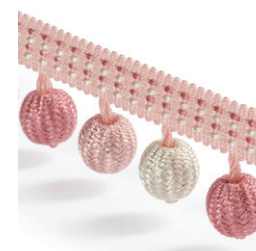
Blue  
9005/03



Green  
9005/04



Terracotta  
9005/05



Pink  
9005/06

Quality: 9005 Composition: 61% Plastic Beads, 22% Polyester, 15% Acrylic, 2% Polyamide  
Colours: 6 Width: 4cms/1.57" Horizontal Repeat: 9cms/3.54"



## Howdah Fringe

A delicate tassel fringe hangs from a subtle woven heading. The design mixes tonal matt and shiny yarns for extra detail that will coordinate across key James Hare colour groups. The Howdah fringe provides an extra layer of styling when decorating.



Natural  
9009/01



Pink  
9009/02



Green  
9009/03

Quality: 9009 Composition: 59% Polyester, 38% Acrylic, 3% Polyamide Colours: 3  
Width: 7cm/2.7" Horizontal Repeat 3cm/1.2"







## Brush Fringe

Matt and bright yarns combine to create a beguiling blend of fringes that will bring interest and texture to any of the plain fabrics in the James Hare collection.



Almond  
9001/02



Feather  
9001/03



Terracotta  
9001/05



Morandi Grey  
9001/01



Antoinette  
9001/04



Mushroom  
9001/06

Quality: 9001 Composition: 99% Viscose 1% Polyester Colours: 6 Width: 4cms/1.57"

## Double Fringe



Morandi Grey  
9002/01



Almond  
9002/02



Feather  
9002/03



Antoinette  
9002/04

Quality: 9002 Composition: 100% Viscose Colours: 4 Width: 4cms/1.57" Horizontal Repeat 3.5cms/1.38"





JH

James Hare Limited Monarch House 7 Queen Street Leeds LS1 2TW UK  
Telephone +44 (0)113 243 1204 sales@james-hare.com  
www.james-hare.com