



JAMES HARE  
SINCE 1865



SHALIMAR



# SHALIMAR

CLASSIC AND CONTEMPORARY

INTERIOR DECORATION

# WELCOME TO SHALIMAR

The world came to “The Great Shalimar”, the monumental Crystal Palace that was home to London’s Great Exhibition in 1851. As a hugely influential global showcase of the artistic and the artisan, and an eclectic melting pot of influences and ideas, it is a fitting inspiration for the new collection.

Elegantly blending the classic with the contemporary, Shalimar combines floral embroideries with geometric jacquards and ikat stripes. From sumptuous Tiger velvet and fine pinstripes to playful prints, the collection is designed to inspire striking fabric combinations.

The smart set of decorative trimmings, including statement braids and whimsical fringes add the perfect finishing touch.

Classic, cosmopolitan, and exciting, prepare to create stylish interiors.













**Left** Curtain: Shalimar, Red/Green  
**Right** Cushion: Shalimar, Red/Green. Chair: Paxton, Blue/Green













**Left** Cushions (top to bottom): Dacca, Red/Pink. Dacca, Grey/Gold. Dacca, Blue/Green.

**Right** Canopy: Dacca, Red/Pink. Trim Howdah Fringe, Pink. Headboard: Paxton, Red/Gold. Cushions (l-r): Beauchamp Velvet, Ochre. Sylvan, Natural. Simla Silk, Cygnet. Trim: Hatchett Braid, Pink/Orange





















**Left** Blind: Asscher, Blue Haze. Curtains: Connaught Silk, Vista (edge). Connaught Silk, Whisper White. Chairs: Asscher, Blue Haze. Bolsters: Connaught Silk, Surf.

**Right** Asscher (top to bottom): Baritone Blue, Blue Haze, Nirvana, Dove Tail, Castor Grey, Dusty Pink, Syrah, Fiesta, Chai Tea, Perfect Pear.











**Left:** Cushions (l to r): Pinstripe, Silk Moth. Pinstripe, Frost. Pinstripe, French Grey. Curtain: Trailing Tree, Silk Moth. Tieback: Elm Braid, Natural

**Right** Curtains: Trailing Tree, Silk Moth. Tiebacks: Elm Braid, Natural. Blind: Pinstripe, Silk Moth. Trim: Bibury Drops, Natural. Cushions (l to r): Simla Silk, Cygnet. Trim: Elm Braid, Natural. Trailing Tree, Silk Moth. Trim: Bibury Drops, Natural.















# SHALIMAR AT A GLANCE

## FABRICS

### SHALIMAR



RED/GREEN  
31671/01



RED/MUSHROOM  
31671/02



BLUE/GREEN  
31671/03

### SYLVAN



GOLD  
31672/01



BLUE/GREEN  
31672/02

### TIGER VELVET

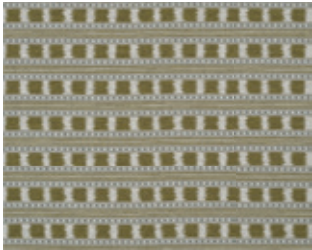


IVORY  
8336/01

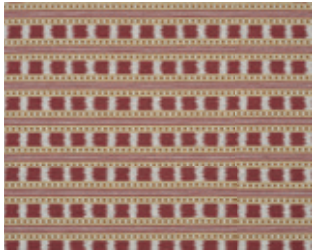


NATURAL  
8336/02

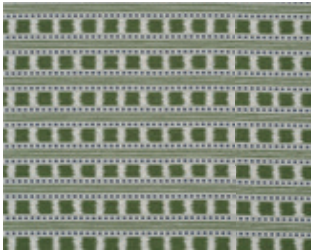
### PAXTON



GREY/GOLD  
8337/01

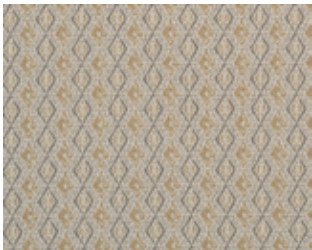


RED/GOLD  
8337/02



BLUE/GREEN  
8337/03

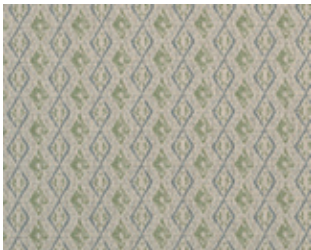
### DACCA



GREY/GOLD  
8339/01



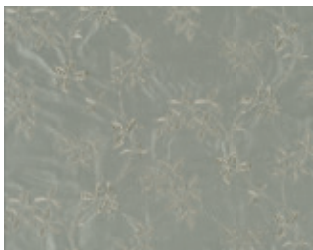
RED/PINK  
8339/02



BLUE/GREEN  
8339/03



## TRAILING TREE



FRENCH GREY  
31535/04

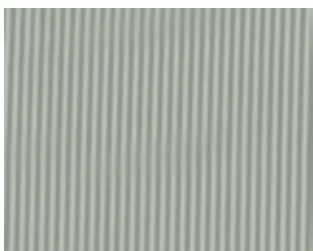


SILK MOTH  
31535/05

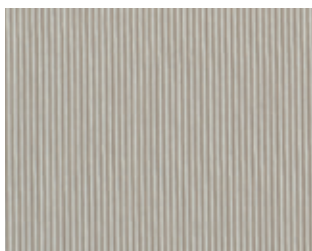


FROST  
31535/06

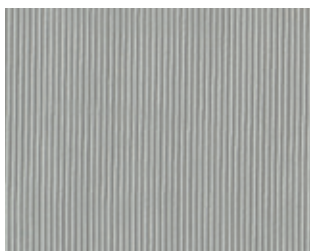
## PINSTRIPES



FRENCH GREY  
31673/01



SILK MOTH  
31673/02



FROST  
31673/03

## TRIMS

### ELM BRAID



NATURAL  
9007/01



PINK  
9007/02



GREEN  
9007/03



BLUE  
9007/04

### HATCHETT BRAID



GREY/GOLD  
9008/01



PINK/ORANGE  
9008/02



BLUE/GREEN  
9008/03

### HOWDAH FRINGE



IVORY  
9009/01



PINK  
9009/02



GREEN  
9009/03



# ABOUT JAMES HARE

Since James Hare's humble beginnings in 1865, the Hare family has been designing, manufacturing and distributing elegant fabrics using only the finest materials and techniques.

An extensive range of plains in everything from pure and faux silk to linen is available in over 700 colours, along with a gorgeous array of embroideries and jacquards. Virtually all the fabrics can be paper backed to create luxurious wallcoverings, bringing intense colour and texture to an interior.

Now run by the fifth generation of the family, the company still abides by its founder's principles of offering only the best in British design, quality and service.





**WITH SPECIAL THANKS TO:**

**DAVID SEYFRIED**  
[WWW.DAVIDSEYFRIED.COM](http://WWW.DAVIDSEYFRIED.COM)

**KELLING DESIGNS**  
[WWW.KELLINGDESIGNS.COM](http://WWW.KELLINGDESIGNS.COM)

**MAISON ARTEFACT**  
[WWW.MAISONARTEFACT.COM](http://WWW.MAISONARTEFACT.COM)

**MAX ROLLITT**  
[WWW.MAXROLLITT.COM](http://WWW.MAXROLLITT.COM)

**NIMMO & SPOONER**  
[WWW.NIMMOANDSPOONER.COM](http://WWW.NIMMOANDSPOONER.COM)

**STUDIO ATKINSON**  
[WWW.STUDIO-ATKINSON.COM](http://WWW.STUDIO-ATKINSON.COM)

**THE HEADBOARD WORKSHOP**  
[WWW.THEHEADBOARDWORKSHOP.CO.UK](http://WWW.THEHEADBOARDWORKSHOP.CO.UK)

**THE ORIGINAL BED CO**  
[WWW.OBC-UK.NET](http://WWW.OBC-UK.NET)





JH

James Hare Limited Monarch House 7 Queen Street Leeds LS1 2TW UK  
Telephone +44 (0)113 243 1204 sales@james-hare.com www.james-hare.com