



JAMES HARE

SINCE 1865



Fabric Wallcoverings



FABRIC WALLCOVERINGS

Fabric wallcoverings produce dramatic walls with natural texture and intense depth of colour, creating a smart and stylish alternative to traditional wallpaper.

Virtually all James Hare's wonderful fabrics can be paper backed to create wallcoverings. With a vast collection of plains, together with fabulous woven patterns, there are a dazzling range of possibilities.

Since 1865, the Hare family has been designing, manufacturing and distributing elegant fabrics using only the finest materials and techniques.

Now run by the fifth generation of the family, the company still abides by its founder's principles of offering only the best in British design, quality and service.

We hope you are inspired.

| | | | |
|---------------------------|----|------------------------------------|----|
| Orissa Silk | 4 | Chiltern Faux Silk | 34 |
| Vienne Silk | 14 | Lismore Linen | 36 |
| Vyne Silk | 18 | Leopard | 38 |
| Simla Silk | 20 | Shagreen Silk | 40 |
| Kashmiri Silk | 22 | Bespoke Wallcovering Service . . . | 42 |
| Connaught Silk | 24 | Advice & Information | 43 |
| Astor Faux Silk | 28 | | |



ORISSA SILK

A sustainable, pure silk handwoven dupion. This remarkable fabric is produced from yarns naturally intertwined by silkworms cocooning closely together, resulting in an irregular “slubby” thread that gives this silk its unique beauty.

Quality: 31446WC Composition: 100% Silk Colours: 214 Width: 137cms/54" Piece Length: 24mtrs /26.25 yards



White
31446WC/76



Ivory
31446WC/01



Smooth Ivory
31446WC/01SM



Apple White
31446WC/198



Pearl
31446WC/03



Pale Pink
31446WC/195



Shell Pink
31446WC/196



Peach Blossom
31446WC/101



Mica
31446WC/17



Light Apricot
31446WC/115



Tranquility
31446WC/226



Quinoa
31446WC/225



Champagne
31446WC/02



Magnolia
31446WC/04



Bamboo
31446WC/68



Cream
31446WC/60



Original Bamboo
31446WC/185



Prosecco
31446WC/06



Mosel
31446WC/18



Sesame
31446WC/59

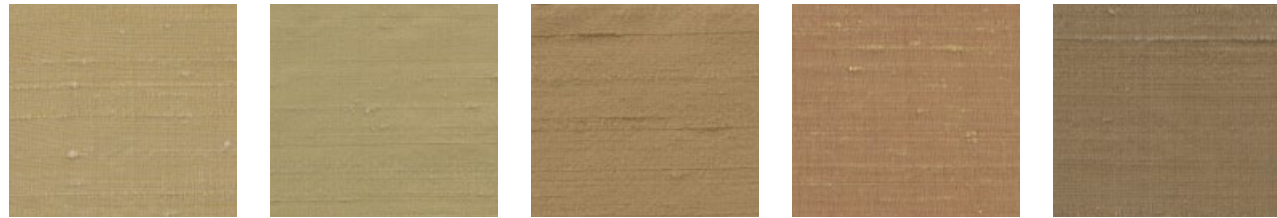


Right Wallcovering: Orissa Silk, French Navy 31446WC/125

ORISSA SILK



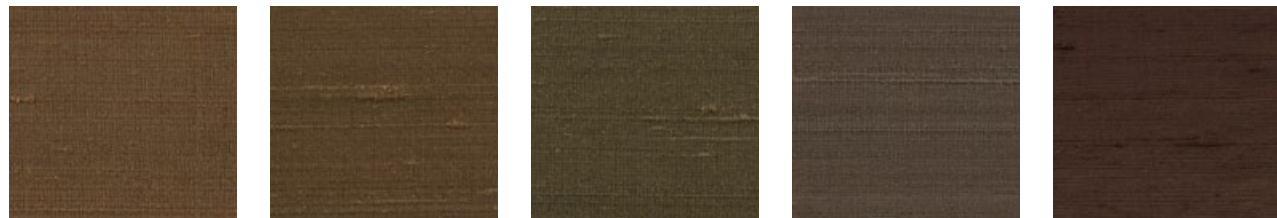
Platinum 31446WC/05 Silver Sand 31446WC/08 Seashell 31446WC/07 Desert Sand 31446WC/126 Mink 31446WC/161



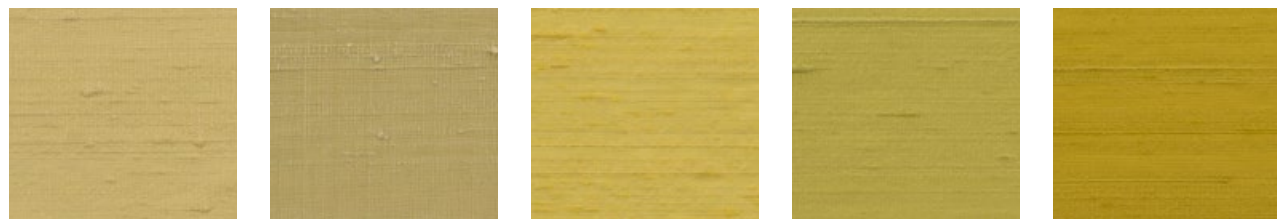
Mango 31446WC/138 Seamist 31446WC/61 Doeskin 31446WC/94 Honeysuckle 31446WC/70 Amaretto 31446WC/09



Inca Gold 31446WC/156 Dusk 31446WC/127 Siena 31446WC/73 Trout 31446WC/27 Bronze 31446WC/205



Fudge 31446WC/26 Walnut 31446WC/10 Otter 31446WC/13 Mole 31446WC/25 Nutmeg 31446WC/119



Daffodil 31446WC/87 Primrose 31446WC/62 Sunflower 31446WC/207 Apollo 31446WC/247 Goldfinch 31446WC/246

ORISSA SILK



Rattan 31446WC/173 Saffron 31446WC/67 Linseed 31446WC/64 Butterscotch 31446WC/69 Honey 31446WC/157



Satsuma 31446WC/265 Gold Leaf 31446WC/66 Gold 31446WC/203 Mustard 31446WC/83 Tangerine 31446WC/72



Pewter 31446WC/14 Gilt 31446WC/65 Brass 31446WC/250 Acacia 31446WC/63 Meadow 31446WC/139



Lime 31446WC/133 Lily 31446WC/164 Green Haze 31446WC/110 Pistachio 31446WC/56 Coriander 31446WC/139



Green Tea 31446WC/58 Shamrock 31446WC/180 Absinthe 31446WC/248 Gooseberry 31446WC/249 Kiwi 31446WC/55

ORISSA SILK



Thyme
31446WC/53



Olive
31446WC/116



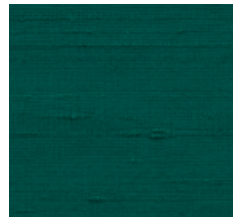
Vineyard
31446WC/54



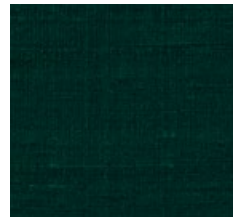
Leaf Green
31446WC/202



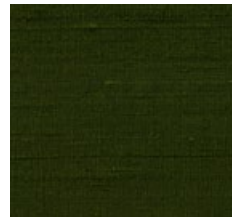
Larch
31446WC/144



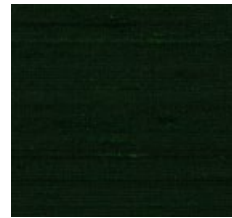
Turtle Green
31446WC/145



Emerald Green
31446WC/201



Forest Green
31446WC/118



Laurel
31446WC/146



Tartan Green
31446WC/100



Grayling
31446WC/231



Silver Blue
31446WC/215



Cornflower
31446WC/199



Gin
31446WC/227



Jasmine
31446WC/224



Ghost
31446WC/228



Limestone
31446WC/229



Pearl Grey
31446WC/90



Moonstone
31446WC/43



Nimbus
31446WC/230



Earl Grey
31446WC/233



Malt
31446WC/236



Saltwater
31446WC/243



Dawn Mist
31446WC/128



Solitaire
31446WC/244

ORISSA SILK



Bermuda
31446WC/99



Praline
31446WC/237



Horizon
31446WC/46



Chinchilla
31446WC/162



Above Wallcovering: Orissa Silk, Gilver 31446WC/16



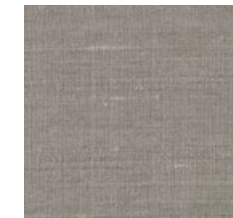
Smokestack
31446WC/238



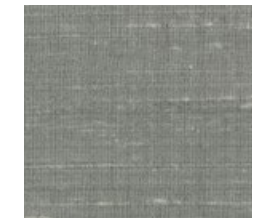
Milk Poppy
31446WC/261



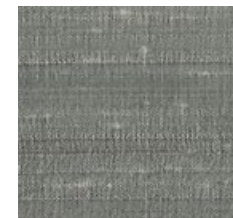
Georgian Grey
31446WC/232



Moon Rock
31446WC/234



Argent
31446WC/235



Silver
31446WC/187



Silver Birch
31446WC/15



Estuary
31446WC/239



Gilver
31446WC/16



Sage
31446WC/102



Morning Coat
31446WC/257



Scree
31446WC/240



Grisaille
31446WC/256



Dolphin
31446WC/242



Magnet
31446WC/241

ORISSA SILK



Wedgewood 31446WC/262 Fern 31446WC/208 Ocean 31446WC/214 Ocean Wave 31446WC/219 Marine Green 31446WC/216



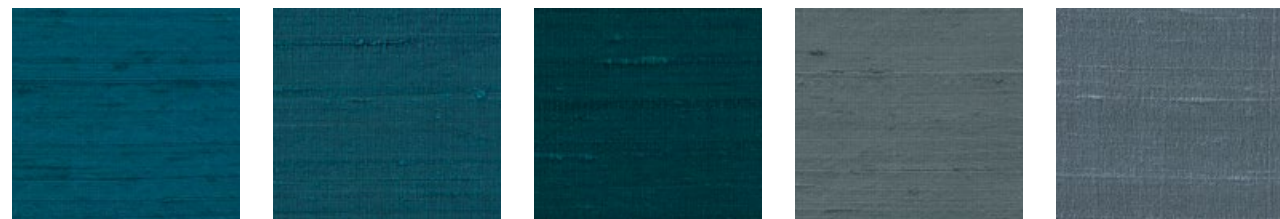
Teal 31446WC/45 Opal 31446WC/47 Eucalyptus 31446WC/52 Jade 31446WC/48 Mermaid 31446WC/117



Cambridge 31446WC/245 Sky 31446WC/168 Flint 31446WC/211 Cezanne 31446WC/263 Birds Egg 31446WC/51



Kingfisher 31446WC/49 Azure Blue 31446WC/188 Cobalt Blue 31446WC/222 Peacock 31446WC/109 Aqua 31446WC/192



Turquoise 31446WC/193 Pagoda 31446WC/169 Pacific 31446WC/107 Baltic 31446WC/92 Shadow Blue 31446WC/106

ORISSA SILK



Norway 31446WC/264 Titan Blue 31446WC/50 Oriental Blue 31446WC/123 Marine 31446WC/190 French Navy 31446WC/125



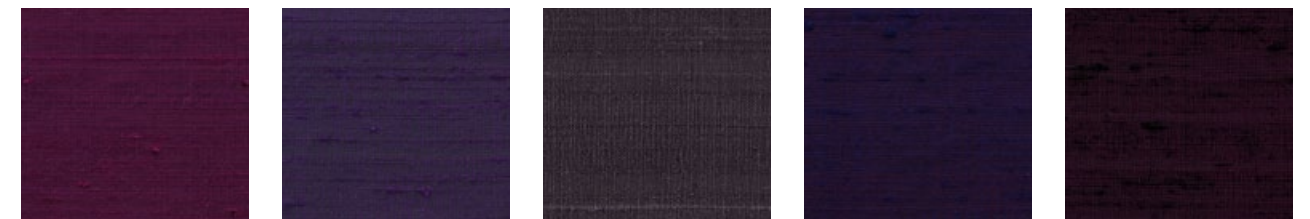
Royal 31446WC/200 Classic Blue 31446WC/114 Delph Blue 31446WC/189 Persian Blue 31446WC/170 Sapphire 31446WC/191



Hyacinth 31446WC/217 Bluebell 31446WC/179 Gulf 31446WC/176 Iris 31446WC/113 Lavender 31446WC/220



Sorbet 31446WC/182 Royal Lilac 31446WC/81 Rosebud 31446WC/221 Wild Rose 31446WC/218 Myrtle 31446WC/39



Heather 31446WC/141 Montana 31446WC/183 Deep Plum 31446WC/258 Purple Red 31446WC/197 Rose Black 31446WC/206

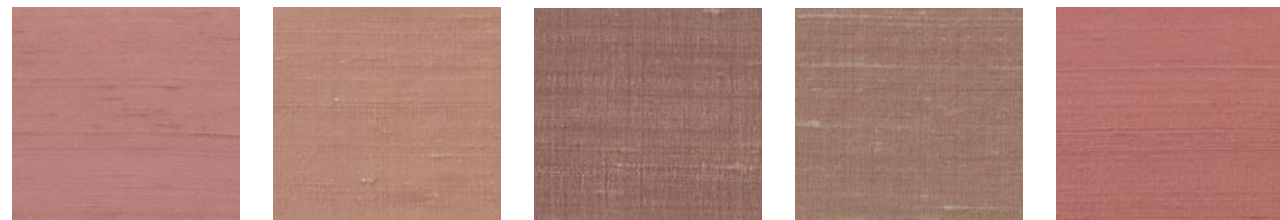
ORISSA SILK



Provence 31446WC/42 Grape 31446WC/103 Beaver 31446WC/163 Slate 31446WC/41 Amethyst 31446WC/40



Apricot 31446WC/212 Candy 31446WC/213 Shimmer Pink 31446WC/209 Pink 31446WC/186 Candy Floss 31446WC/210



Salmon Rose 31446WC/223 Blush Pink 31446WC/20 Mauve Glow 31446WC/82 Fondant 31446WC/19 Sophie's Pink 31446WC/255



Terracotta 31446WC/174 Hibiscus 31446WC/31 Watermelon 31446WC/252 Boudoir 31446WC/21 Seville 31446WC/28



Renoir 31446WC/253 Raspberry 31446WC/80 Fuchsia 31446WC/194 Mademoiselle 31446WC/254 Geranium Pink 31446WC/33

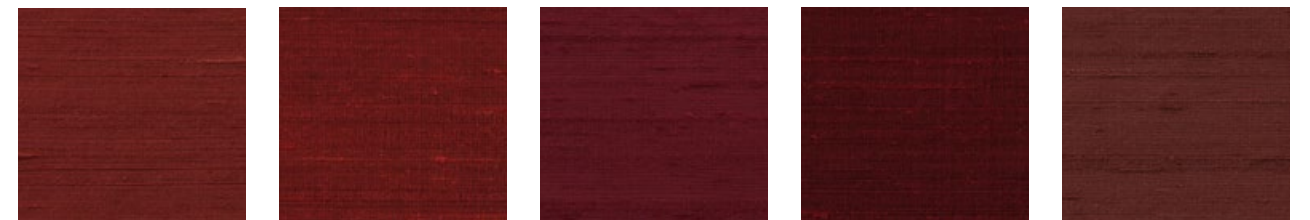
ORISSA SILK



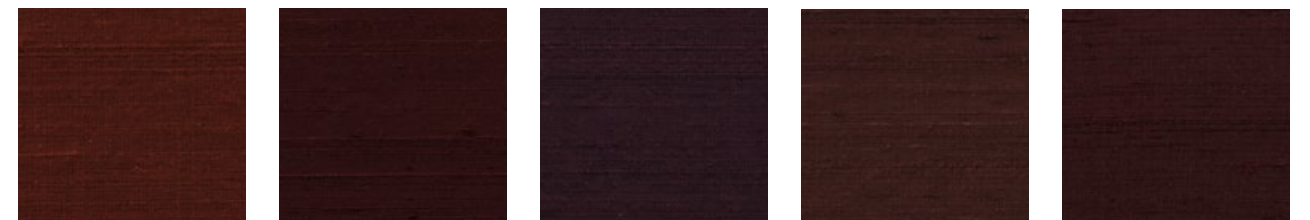
Damson 31446WC/37 Firefly 31446WC/181 Paprika 31446WC/71 Java 31446WC/251 Scarlet 31446WC/204



Tartan Red 31446WC/143 Poinsettia 31446WC/78 Carmen 31446WC/34 Emperor Red 31446WC/131 Ruby Red 31446WC/35



Persimmon 31446WC/32 Mars 31446WC/30 Juniper 31446WC/142 Black Red 31446WC/36 Hellebore 31446WC/22



Chestnut 31446WC/29 Claret 31446WC/24 Blackcurrant 31446WC/38 Fig 31446WC/23 Port 31446WC/259



Espresso 31446WC/11 Black Tulip 31446WC/260 Gunmetal 31446WC/184 French Navy 31446WC/125 Black 31446WC/12

VIENNE SILK

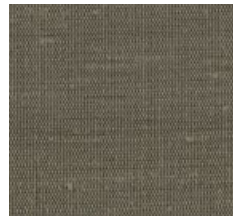
Manufactured using a handwoven process that has remained unchanged for centuries, Vienne Silk is a sustainable silk viscose with an irregular textured surface and an attractive matt finish. A natural choice for decorators.

Quality: 31458WC Composition: 65% Silk, 35% Viscose Colours: 53 Width: 140cms/55" Piece Length: 17mtrs/18.59 yards



Right Wallcovering: Vienne Silk, Bronze 31458WC/09

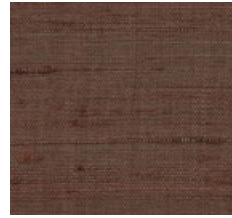
VIENNE SILK



Nutshell
31458WC/41



Bronze
31458WC/09



Porcini
31458WC/29



Badger
31458WC/42



Buddleia
31458WC/43



Strawberry
31458WC/47



Raspberry Coulis
31458WC/46



Bengal
31458WC/23



Cornelian
31458WC/18



Sumatra
31458WC/25



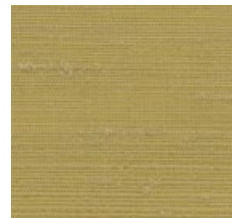
Kimono
31458WC/45



Wineberry
31458WC/22



Dahlia
31458WC/44



Lychee
31458WC/49



Citrus
31458WC/32



Egyptian Gold
31458WC/26



Lemon-grass
31458WC/28



Cactus
31458WC/48



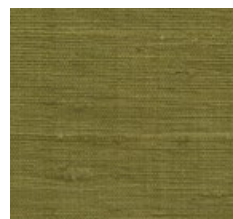
Duck Egg
31458WC/05



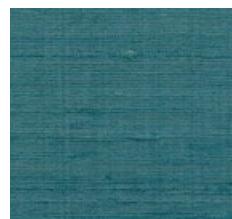
Seaglass
31458WC/30



Serpentine
31458WC/21



Asparagus
31458WC/14



Tobago
31458WC/15



Swedish Blue
31458WC/31



Reflection
31458WC/55

VIENNE SILK



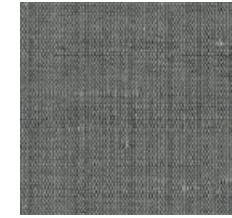
Mountain Stream
31458WC/52



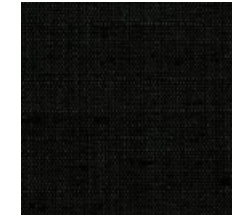
Dove
31458WC/08



Cosmos
31458WC/54



River Pearl
31458WC/24



Black
31458WC/33



Above Wallcovering: Vienne Silk, Bronze 31458WC/09

VYNE SILK

Handwoven and fully sustainable, Vyne Silk has the natural texture of wild silk with subtle colour variation in the weft yarn, making each piece utterly unique in appearance and character. The colour palette is inspired by the "New Neutral" movement of soft pastels and subtle greys with a hint of blue, sage and pink. A timeless fabric with a richness providing a luxury element to an interior.

Quality: 31625WC Composition: 100% Silk Colours: 13 Width: 140cms/55" Piece Length: 17mtrs/18.59 yards



Ivory
31625WC/01



Blanched Almond
31625WC/03



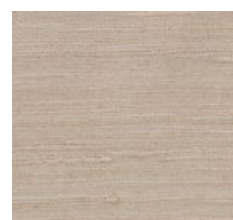
Wild Rice
31625WC/02



Plover
31625WC/04



Oolong
31625WC/11



Rose Quartz
31625WC/13



French Grey
31625WC/10



Waterford
31625WC/12



Morel
31625WC/05



Meteorite
31625WC/08



Galway
31625WC/07



Nordic Blue
31625WC/09



Black Bean
31625WC/06



Right Wallcovering: Vyne Silk, French Grey 31625WC/10
Oolong 31625WC/11

SIMLA SILK

A sustainable matka fabric created from recycled silk known as "noil" or waste. Using unchanged traditional methods, Simla Silk is handcrafted by artisan weavers to produce a fabric of unique character and distinctive matt surface.

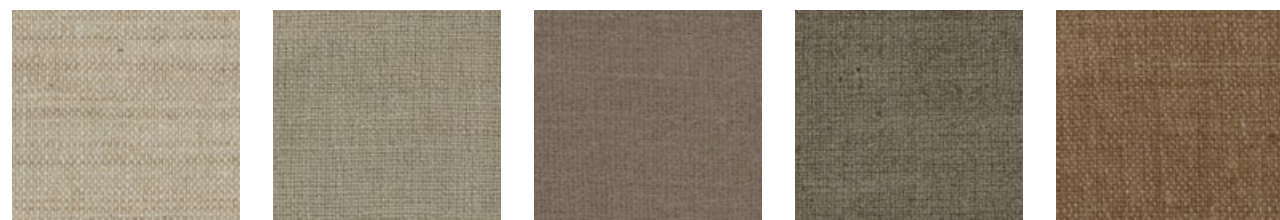
Quality: 31463WC Composition: 100% Silk Colours: 29 Width: 140cms/55" Piece Length: 17mtrs/18.59 yards



White 31463WC/37 Ivory 31463WC/01 Vanilla Blush 31463WC/40 Soft Pink 31463WC/50 Ling Heather 31463WC/51



Nougat 31463WC/07 Antique Stone 31463WC/34 Cygnet 31463WC/38 Aran 31463WC/03 Wheat 31463WC/39



Oatmeal 31463WC/02 Linen Grey 31463WC/33 Sphinx 31463WC/52 Nomad 31463WC/49 Pelt 31463WC/04



Ash 31463WC/29 Murmur 31463WC/44 Fog Green 31463WC/41 Reseda 31463WC/42 Cambridge Green 31463WC/43



Above Wallcovering: Simla Silk, Oatmeal 31463WC/02



Pearl Blue 31463WC/46 Blue Haze 31463WC/47 Fairisle 31463WC/25 Abyss 31463WC/48 Gustavian Blue 31463WC/26



Ash 31463WC/29 Metal 31463WC/45 French Grey 31463WC/28 Grit 31463WC/30 Harbour 31463WC/27

KASHMIRI SILK

A pure silk matka fabric with a matt surface and a natural colour palette of 22 sophisticated shades.
This beautiful basketweave fabric will create a luxurious wallcovering.

Quality: 31641WC Composition: 100% Silk Colours: 22 Width: 137cms/54" Piece Length: 17mtrs/18.59 yards



Right Wallcovering: Kashmiri Silk, Fawn 31641WC/22

CONNAUGHT SILK

Connaught Silk is characterised by its elegant matt sheen, created by a luxurious marriage of silk and merino wool. Perfect for a smart tailored look.

Quality: 31519WC Composition: 56% Silk, 44% Wool Colours: 49 Width: 140cms/55" Piece Length: 24mtrs /26.25 yards



Right Wallcovering: Connaught Silk, Ballerina 31519WC/34



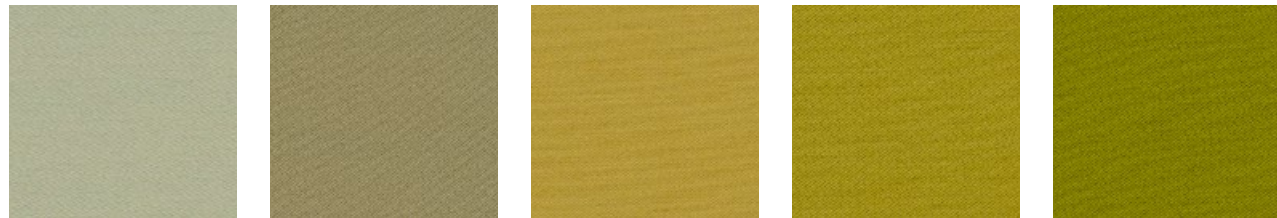
CONNAUGHT SILK



Kashmir 31519WC/51 Jalapeno 31519WC/16 Carmine 31519WC/18 Cossack 31519WC/50 Elizabethan 31519WC/17



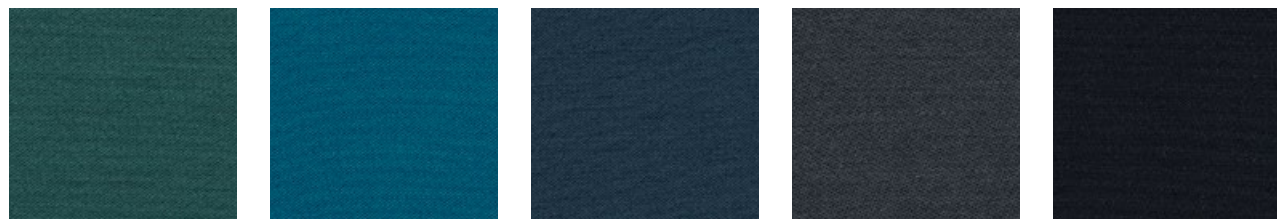
Ballerina 31519WC/34 Blush 31519WC/33 Rosewater 31519WC/62 Pink Salt 31519WC/61 Mushroom 31519WC/21



Frosted Sage 31519WC/53 Greenfinch 31519WC/31 Corona 31519WC/49 Glory 31519WC/48 Wild Fennel 31519WC/47



Cardamon 31519WC/13 Smoke Green 31519WC/54 Samphire 31519WC/15 Watercress 31519WC/55 Monkey Puzzle 31519WC/46



Bali 131519WC/11 Meconopsis 31519WC/42 Van Gogh Blue 31519WC/43 Moonlit 31519WC/58 Midsummer Night 31519WC/44

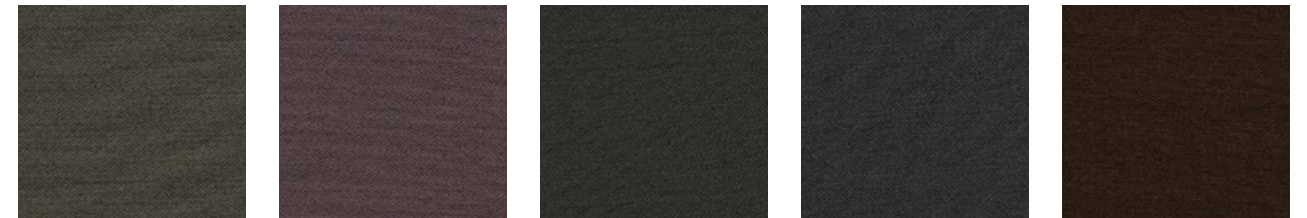
CONNAUGHT SILK



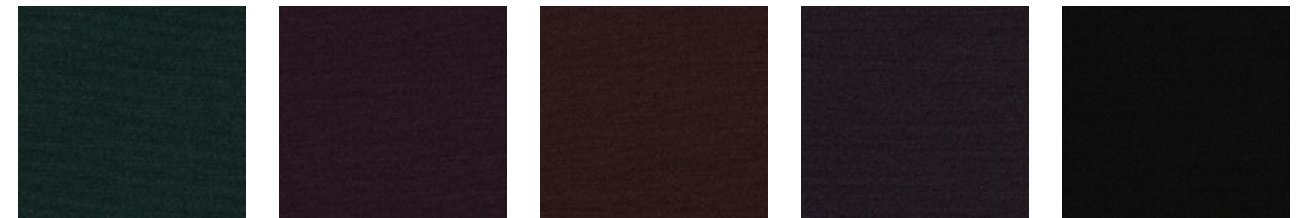
Alice Blue 31519WC/40 Surf 31519WC/56 Alfresco 31519WC/09 High Tide 31519WC/41 Vista 31519WC/57



Morandi Grey 31519WC/35 Antoinette 31519WC/30 Chateau Grey 31519WC/37 Lakestone 31519WC/06 Slate Blue 31519WC/10



Lava Stone 31519WC/38 Dried Lavender 31519WC/23 Graphite 31519WC/07 Cinder 31519WC/39 Ganache 31519WC/25



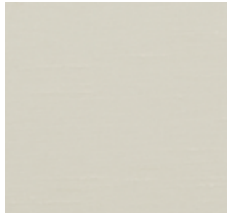


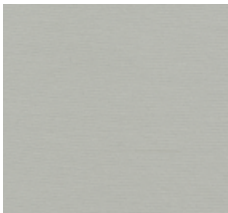
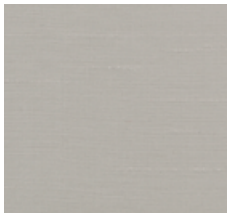



Spruce 31519WC/45 Aster 31519WC/19 Tamarind 31519WC/20 Blueberry 31519WC/24 Caviar 31519WC/32

ASTOR FAUX SILK

Elegantly replicating the opulent look and feel of a natural silk dupion, Astor is a polyester faux silk that offers practicality with an unmistakable touch of luxury.

Quality: 31554WC Composition: 100% Polyester Colours: 110 Width: 140cms/55" Piece Length: 24mtrs /26.25 yards

| | | | | |
|---|---|---|--|---|
|  |  |  |  |  |
| White 31554WC/02 | Light Ivory 31554WC/03 | Ivory 31554WC/01 | Origami 31554WC/04 | Ballerina 31554WC/102 |
|  |  |  |  |  |
| Illusion 31554WC/36 | Hepplewhite 31554WC/38 | Oat 31554WC/58 | Eider Down 31554WC/05 | Coconut 31554WC/06 |
|  |  |  |  |  |
| Stockholm 31554WC/39 | Pale Duck Egg 31554WC/100 | Luna 31554WC/37 | Sea Salt 31554WC/59 | Mezze 31554WC/87 |
|  |  |  |  |  |
| Scallop 31554WC/07 | Croft 31554WC/62 | Lapin 31554WC/08 | Reindeer 31554WC/09 | Jute 31554WC/63 |

Right Wallcovering: Astor Faux Silk, Okra 31554WC/77



ASTOR FAUX SILK



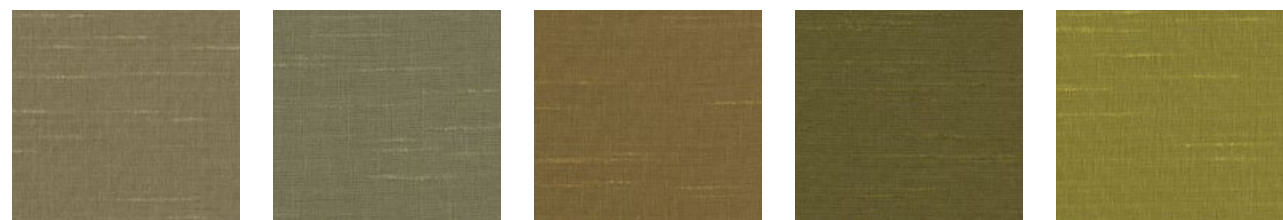
Buttercream 31554WC/86 Corsica 31554WC/19 Seychelles 31554WC/88 Loaf 31554WC/17 Peanut 31554WC/20



Windswept 31554WC/18 Narcissus 31554WC/85 Mellow Yellow 31554WC/84 Grapefruit 31554WC/21 Celandine 31554WC/22



Golden Amber 31554WC/83 Goldcrest 31554WC/23 Lime Daiquiri 31554WC/81 Mizuna 31554WC/82 Pesto 31554WC/25



Oxide 31554WC/15 Olivewood 31554WC/79 Icon 31554WC/16 Green Fig 31554WC/80 Sour Green 31554WC/24

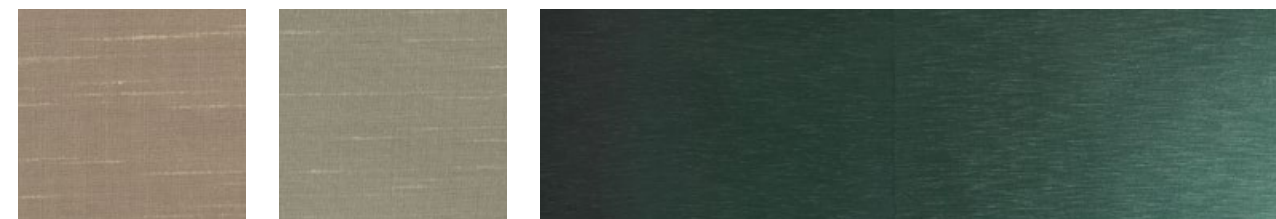


Botanic 31554WC/26 Okra 31554WC/77 Mallard 31554WC/67 Emerald City 31554WC/68 Shale Green 31554WC/28

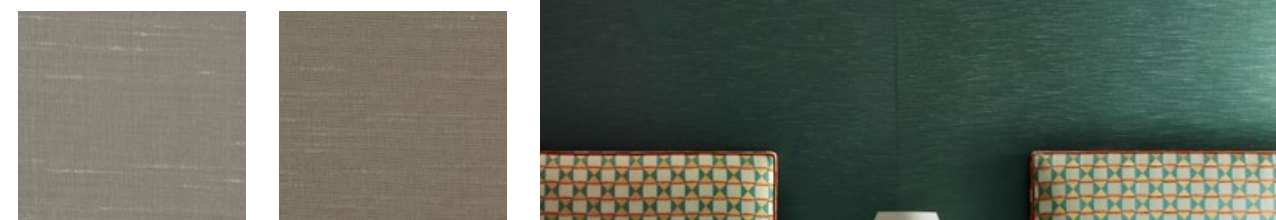
ASTOR FAUX SILK



Shale 31554WC/78 Wood Smoke 31554WC/61 Chateau 31554WC/29 Reindeer 31554WC/09 Jute 31554WC/63



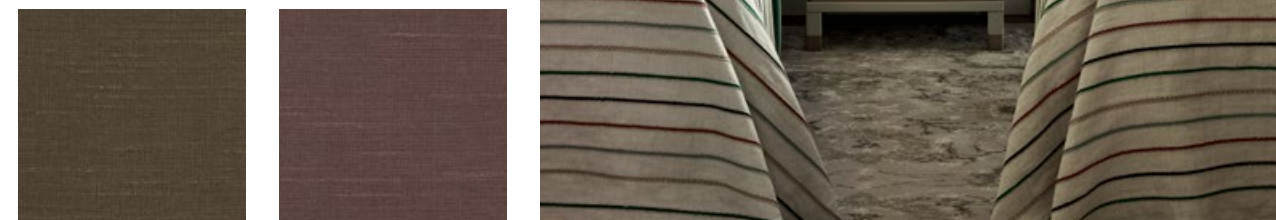
Irish Cream 31554WC/14 Cuckoo 31554WC/10



Koi 31554WC/12 Seagrass 31554WC/60



Barn 31554WC/11 Burnished Chocolate 31554WC/64

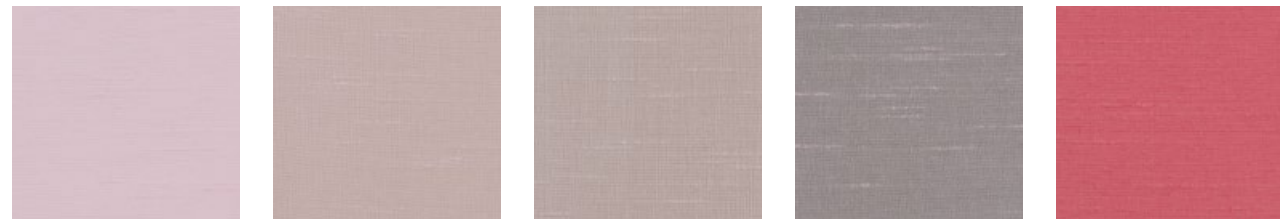


Bourbon 31554WC/13 Larkspur 31554WC/42



Above Wallcovering: Astor Faux Silk, Okra 31554WC/77

ASTOR FAUX SILK



Cherry Blossom 31554WC/91 Tutu 31554WC/90 Dusty Blush 31554WC/89 Mallow 31554WC/99 Lotus Flower 31554WC/93



Gambas 31554WC/92 Love 31554WC/46 Beetroot 31554WC/94 Boutique 31554WC/45 Pumpkin 31554WC/51



Clementine 31554WC/50 Cardinal 31554WC/47 Cranberry 31554WC/95 Medieval 31554WC/48 Phoenix 31554WC/49



Bunting 31554WC/73 Sky's The Limit 31554WC/76 Scandi 31554WC/101 Venice 31554WC/31 Surf Spray 31554WC/27



Aquarius 31554WC/66 Liberty 31554WC/32 Waterside 31554WC/75 Azores 31554WC/55 Shell 31554WC/98

ASTOR FAUX SILK



Titanium 31554WC/40 Silver Mist 31554WC/97 Rainstorm 31554WC/30 Silver Charm 31554WC/57 Loch Blue 31554WC/56



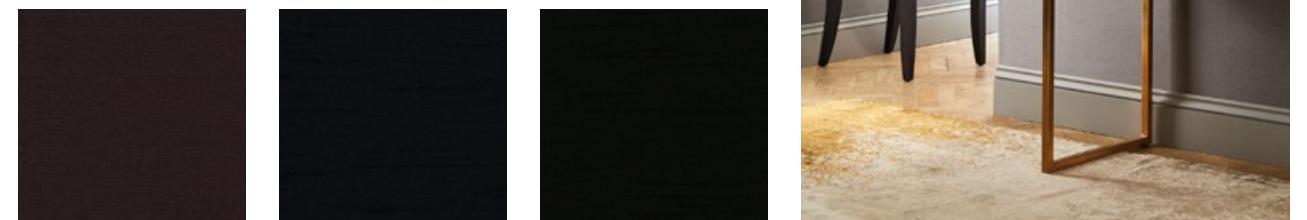
Hockney Blue 31554WC/69 Cruise 31554WC/70 Cornwall Riviera 31554WC/72 Voyage 31554WC/33 Padstow 31554WC/74



Crocus 31554WC/96 Chambray 31554WC/71 Bloom 31554WC/43



Nautilus 31554WC/65 Breton 31554WC/34 Whale 31554WC/41



Calla Lily 31554WC/44 Navy 31554WC/35 Black 31554WC/53



Above Wallcovering: Astor Faux Silk, Luna 31554WC/37

CHILTERN FAUX SILK

This faux silk emulates the look and feel of a real wild silk with the distinctive natural slub running across the weft of the cloth. Available in a wide range of shot and flat colours from soft neutrals to stong greens and yellow, lavender, pinks, terracotta and denim.

Quality: 31626WC Composition: 100% Polyester Colours: 31 Width: 143cms/56.3" Piece Length: 17mtrs/18.59 yards



Ivory
31626WC/01



Almond Milk
31626WC/02



Twine
31626WC/03



Bisque
31626WC/31



Wood Ash
31626WC/28



Gentle Breeze
31626WC/18



Sparrow
31626WC/05



Faroe
31626WC/04



Macadamia
31626WC/06



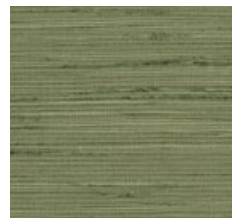
Acai
31626WC/29



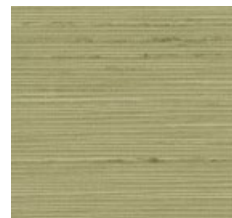
Lemon Peel
31626WC/23



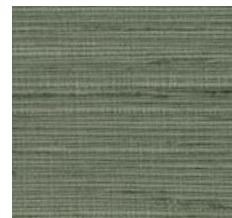
Granita
31626WC/22



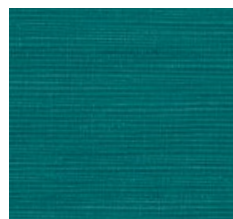
Green Oasis
31626WC/20



Lemon Balm
31626WC/21



Winter Moss
31626WC/19



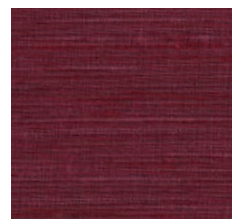
Bora Bora
31626WC/15



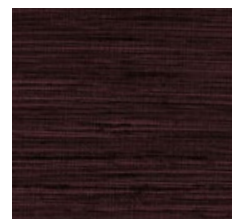
Tickled Pink
31626WC/27



Parma Violet
31626WC/26



Barbados
31626WC/24



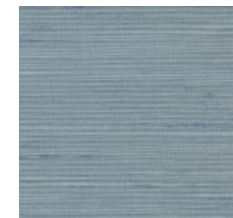
Cabernet
31626WC/25



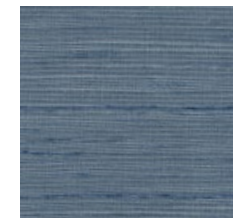
Above Wallcovering: Chiltern Faux Silk, Winter Moss 31626WC/19



Aquarelle
31626WC/16



Splash
31626WC/11



Bel Air
31626WC/12



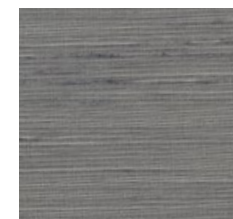
Silver Sconse
31626WC/09



Midwinter
31626WC/07



Potter's Clay
31626WC/08



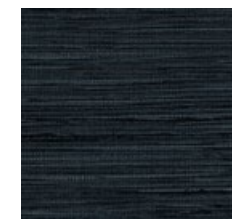
Skyrocket
31626WC/10



Blue Heron
31626WC/17



Iron Gate
31626WC/14



Evening
31626WC/13

LISMORE LINEN

A timeless plain linen available in a range of soothing colours, Lismore is made from natural yarn, making it a sustainable fabric of understated elegance.

Quality: 31658WC Composition: 100% Linen Colours: 24 Width: 142cms/55.9" Piece Length: 17mtrs/18.59 yards

| | | | | | |
|---|---|---|---|--|---|
|  |  |  |  |  |  |
| White 31658WC/02 | Ivory 31658WC/01 | Chamomile 31658WC/03 | Sunlight 31658WC/08 | Natural 31658WC/05 | Mineral 31658WC/06 |
|  |  |  |  |  |  |
| Manilla 31658WC/04 | Sand 31658WC/07 | Plaster 31658WC/21 | Pink Coral 31658WC/22 | Terracotta 31658WC/23 | Crab Apple 31658WC/10 |
|  |  |  |  |  |  |
| Green Almond 31658WC/09 | Chive 31658WC/11 | Sage Green 31658WC/12 | Eau de Nil 31658WC/17 | Estate Blue 31658WC/20 | Lovat Blue 31658WC/18 |
|  |  |  |  |  |  |
| Morandi Grey 31658WC/24 | Steel 31658WC/13 | Glacier 31658WC/19 | Storm 31658WC/14 | Blazer 31658WC/16 | Ink 31658WC/15 |



Right Wallcovering: Lismore Linen, Plaster 31658WC/21

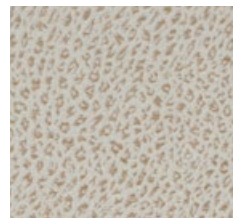
LEOPARD

Equally suited to modern and traditional interiors, this smart, semi-plain jacquard features a striking leopard pattern woven across a textural ground.

Quality: 31665WC Composition: 41% Polyester, 24% Viscose, 21% Linen, 14% Acrylic Colours: 15
Width: 136cms/53.5" Piece Length: 17mtrs/18.59 yards



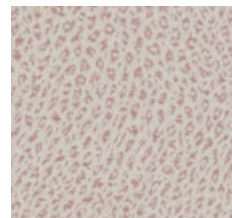
Ivory
31665WC/01



Parget
31665WC/02



Savannah
31665WC/04



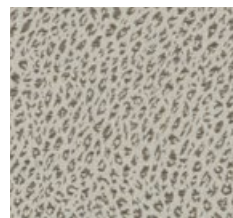
Confetti
31665WC/06



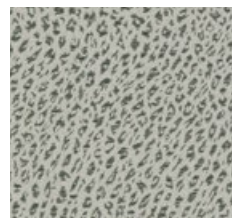
Merle
31665WC/03



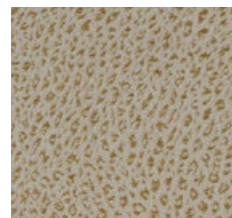
Cockle Pink
31665WC/05



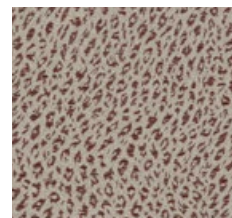
Selkie
31665WC/09



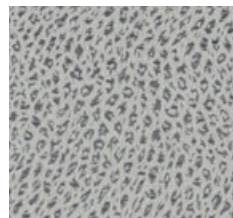
Viridian
31665WC/10



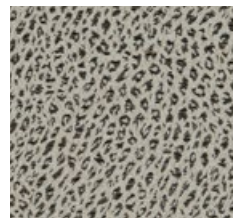
Gold
31665WC/08



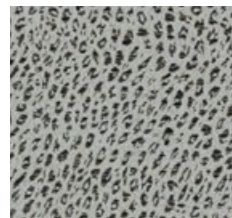
Malbec
31665WC/07



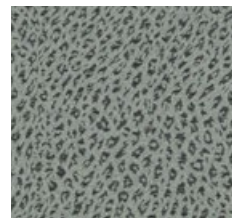
Tidal
31665WC/12



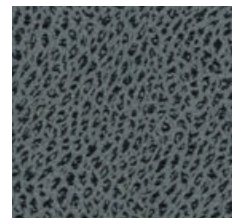
Serval
31665WC/14



Snow Leopard
31665WC/13



Slate Blue
31665WC/11



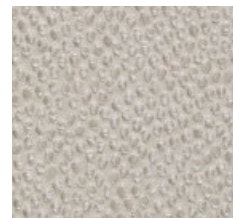
Ink
31665WC/15



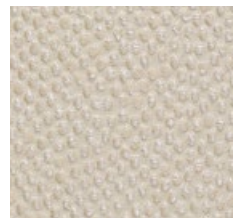
SHAGREEN SILK

Chic and glamorous Shagreen Silk is inspired by exotic shark and ray leathers. Its bold and striking aesthetic is sure to add singular design focus and character to any project.

Quality: 31537WC Composition: 60% Poly, 15% Silk, 15% Wool, 10% Acrylic Colours: 17
Width: 135cms/53" Piece Length: 17mtrs/18.59 yards



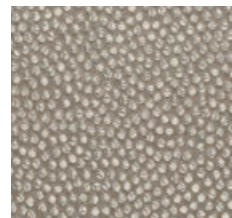
Crystal
31537WC/01



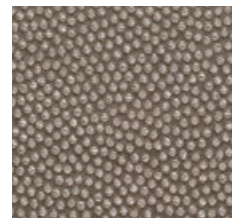
Froth
31537WC/02



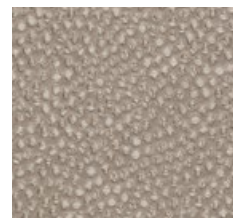
Lentil
31537WC/03



Cowrie
31537WC/17



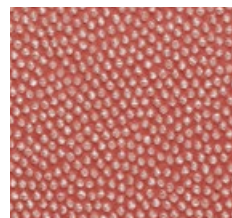
Stingray
31537WC/04



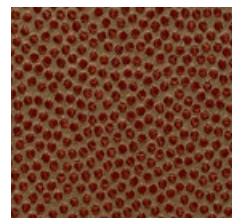
Cassava
31537WC/15



Bonbon
31537WC/23



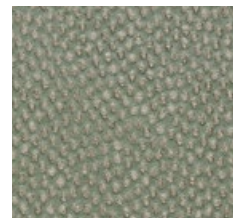
Coral
31537WC/24



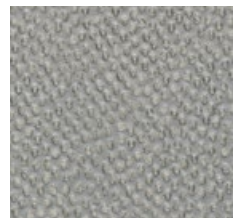
Kilim
31537WC/10



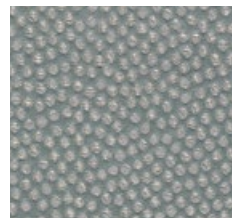
Ochre
31537WC/16



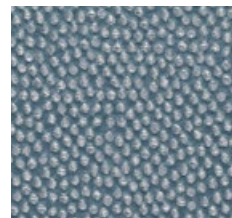
Stepping Stone
31537WC/05



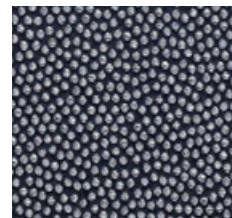
Dovecote
31537WC/19



Freshwater
31537WC/20



Seafoam
31537WC/21



Blue Jay
31537WC/22



Guineafowl
31537WC/18



Pepper
31537WC/09



Right Wallcovering: Shagreen Silk, Crystal 31537WC/01

BESPOKE WALLCOVERING SERVICE

Virtually all our wonderful fabrics can be paperbacked to create wallcoverings. With over 700 plain colours, together with fabulous woven patterns there is a dazzling range of possibilities.



ADVICE & INFORMATION

Characteristics of silk wallcoverings: The finished effect of fabric wallcoverings is panelled and not seamless. As natural fabrics are produced using natural fibres there may be irregularities and variations which will be especially visible as the fabric is laid flat, in particular there may be variations in shade and weave which are characteristics of natural fabrics. We recommend the use of cords or trims along the seams, in particular with thick fabrics, to protect and hide seams.

Hanging instructions: Please do not attempt to hang wallcoverings without reading the silk wallcovering advice sheet on the website https://james-hare.com/media/17096/james-hare-wallcovering-advice-sheets-2021_2.pdf. The company declines all responsibility for problems which may occur during installation due to the inexperience of the decorator. Before hanging, the wallcovering must be checked to ensure that it meets the client's requirements and expectations. Claims will not be accepted for any reason whatsoever after the silk has been hung by the customer, their staff, agents or decorator. Please refer to our website for full details on wallcovering installation.

Horizontal weft lines: The fabric is put under tension during the paper backing process which may result in the horizontal weave becoming distorted. This is commonly referred to as smiling or frowning and is a natural characteristic of a fabric wallcovering. Wallcoverings will not be accepted back if this occurs. Horizontal weaves cannot be matched when applied to the wall.

Lead time: The lead time will be quoted at the time of placing the order but is usually 2 weeks.

Minimum order: The minimum order for wallcoverings is 10 metres/11 yards, if less than 10 metres/11 yards is ordered there will be a surcharge.

Pattern match: Wallcoverings cannot be pattern matched.

Piece lengths: Piece lengths vary between 17-24 metres/18.6-24.3 yards. An allowance of 10% should be added to each piece to accommodate shortfalls.

Quality control: Before hanging, check that you and your client are happy with the quality of various rolls. No liability will be accepted for alleged defects apparent prior to hanging.

Returns: As the wallcoverings are made to order, we are unable to accept returns.

Samples: Samples of the fabrics are available upon request. Whilst we may not have paper backed samples available for every shade of fabric, we shall have a sample of the same quality paper backed.

Trimming: Wallcoverings are supplied untrimmed, we recommend they are trimmed on site by a professional to avoid being damaged in transit.

www.james-hare.com



JH

James Hare Limited Monarch House 7 Queen Street Leeds LS1 2TW UK
Telephone +44 (0)113 243 1204 sales@james-hare.com www.james-hare.com